

Supporting Information

**Integrated Fabrication and Magnetic Positioning of Metallic and Polymeric Nanowires
Embedded in Thin Epoxy Slabs**

Darren J. Lipomi¹, Filip Ilievski¹, Benjamin J. Wiley¹, Parag B. Deotare², Marko Lončar², and
George M. Whitesides^{1*}

¹Harvard University, Department of Chemistry and Chemical Biology

12 Oxford Street, Cambridge, MA 02138

²Harvard University, School of Engineering and Applied Sciences,

33 Oxford Street, Cambridge, MA 02138

*Corresponding Author

Telephone Number: (617) 495-9430

Fax Number: (617) 495-9857

Email Address: gwhitesides@gmwgroup.harvard.edu

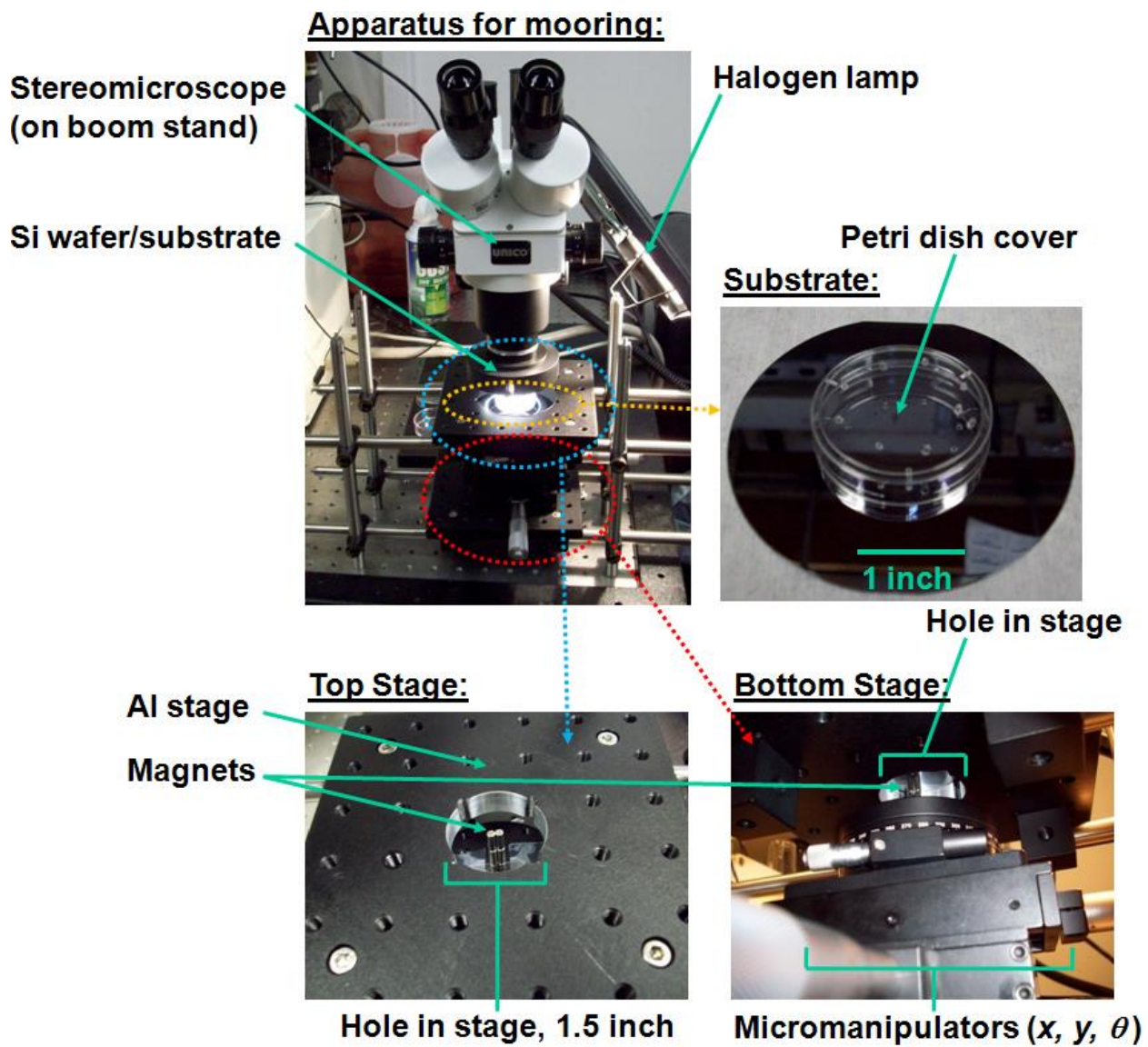


Figure S1. Photograph of the apparatus used for magnetic mooring.

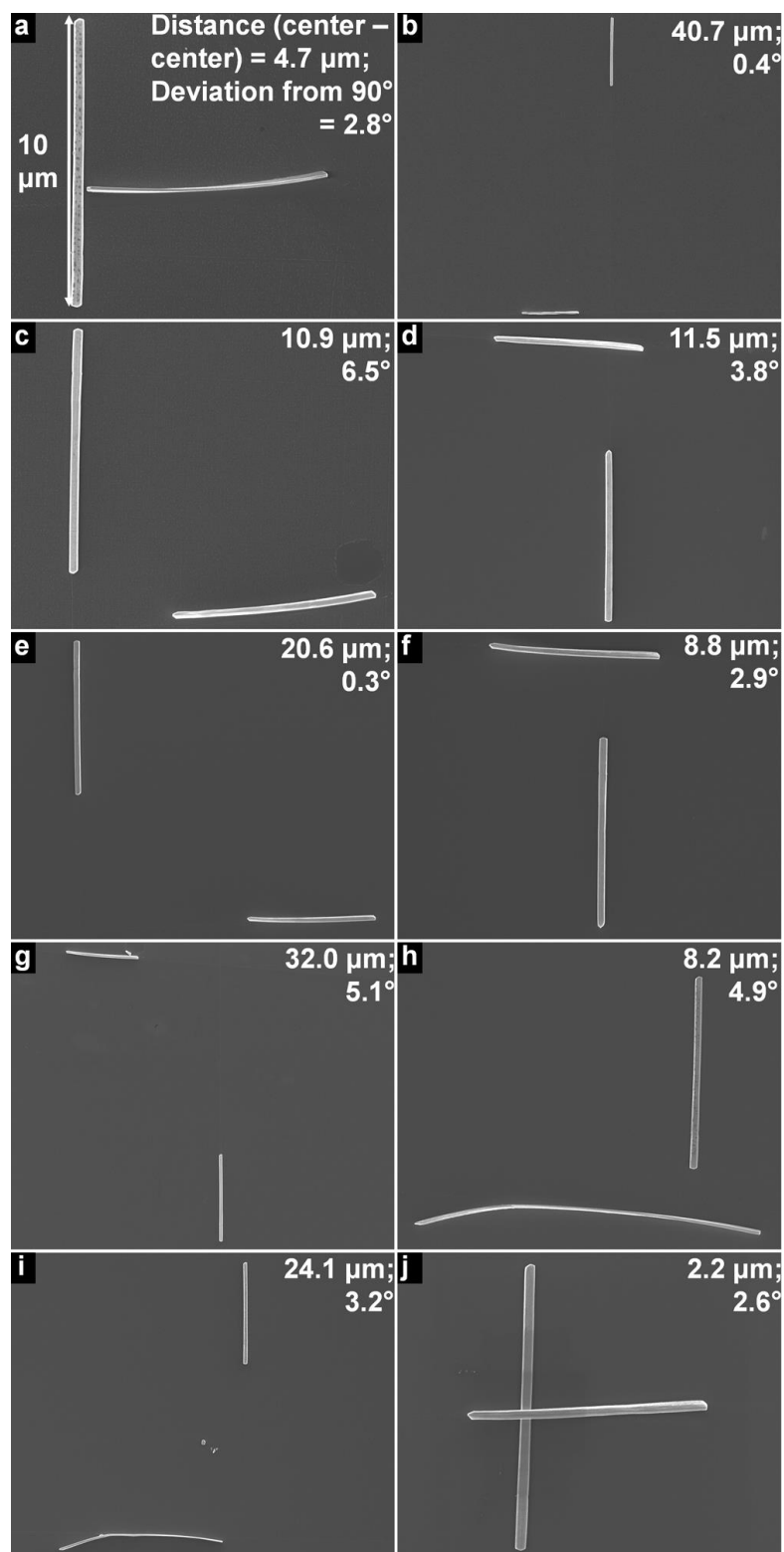


Figure S2. Images of perpendicular nanowires from which we calculated the average positional and orientational deviation. The vertical nanowire is 10 μm long in every image.

